

## ASAP LABORATORY NEWS NOVEMBER 2014

Hi everyone

Please find below the latest ASAP news

### [Webinar: Palladia - Panacea or Placebo. Tuesday 11th November, 8PM](#)

#### **Dr. Raelene Wouda - Kansas State University Vet School**



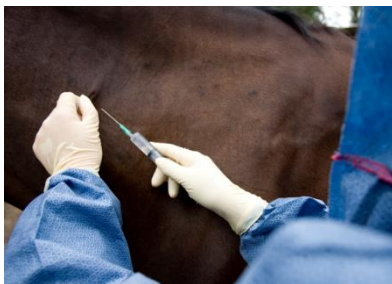
Raelene graduated from the University of Queensland in 2003, with first class Honors and soon after completed a 12-month rotating internship at a private referral practice in Brisbane. In 2006, Raelene returned to Brisbane, completing a three-year Small Animal Internal Medicine Residency at another private referral practice in Brisbane, which included an externship at the University of California-Davis. During this time, two of her four authored papers received the Australian Small Animal Veterinary

Association's Best Clinical Case Report award and the Australian Veterinary Association's Most Commendable Scientific Paper award, and her abstract presentation at the Australian College's annual conference received the Young Speaker's award. In 2007, Raelene passed the examinations for Membership of the Australian and New Zealand College of Veterinary Scientists in the discipline of Small Animal Internal Medicine.

In 2010, Raelene was privileged to be offered the position of Haematology and Transfusion Fellow at the University of Pennsylvania's School of Veterinary Medicine. This position encompassed monitoring and advising on hospitalised cases requiring blood product administration, laboratory testing as it pertains to haematology and transfusion medicine, and oversight of the canine and feline volunteer blood donor health program (Penn Animal Blood Bank). From Philadelphia, Raelene moved to Madison, Wisconsin, to commence a second residency program; this time in Veterinary Oncology before joining Southpaws in 2013 as a Professional Interest Practitioner in Oncology and Internal Medicine. She is now an Assistant Professor - Veterinary Medical Oncology, Kansas State University, College of Veterinary Medicine.

#### **REGISTER NOW**

### [NEW Equine Pre-Purchase Drug Screens](#)



This new testing range can screen for a range of drugs in these 3 classes: **NSAID's, Sedatives and / or Anabolic Steroids** in blood or urine.

Turnaround for these screens is typically 10-14 days.

**One Class Screen - \$265. + GST**

**Two Classes Screens - \$462 + GST**

**Three Classes Screens - \$635 + GST**

The NSAIDs screen covers common non steroidal anti inflammatory drugs and the sedatives screen will cover common sedatives as well as many other drug classes including stimulants, opiates,

amphetamine type drugs, benzodiazepines, barbiturates, cocaine and methadone. The Steroid screen concentrate on anabolic steroids.

These screens are considered preliminary; that is, results will be sent to you as **'no drugs detected'** or **'the presence of is indicated'**.

If for any reason the presence of a drug is required to be confirmed unambiguously, this can be done using additional techniques which will categorically confirm the presence of a drug and meet international quality guidelines. This analysis will cost an additional **\$990** and turnaround is approximately 3-4 weeks, although in some cases this may be greater depending on the drug.

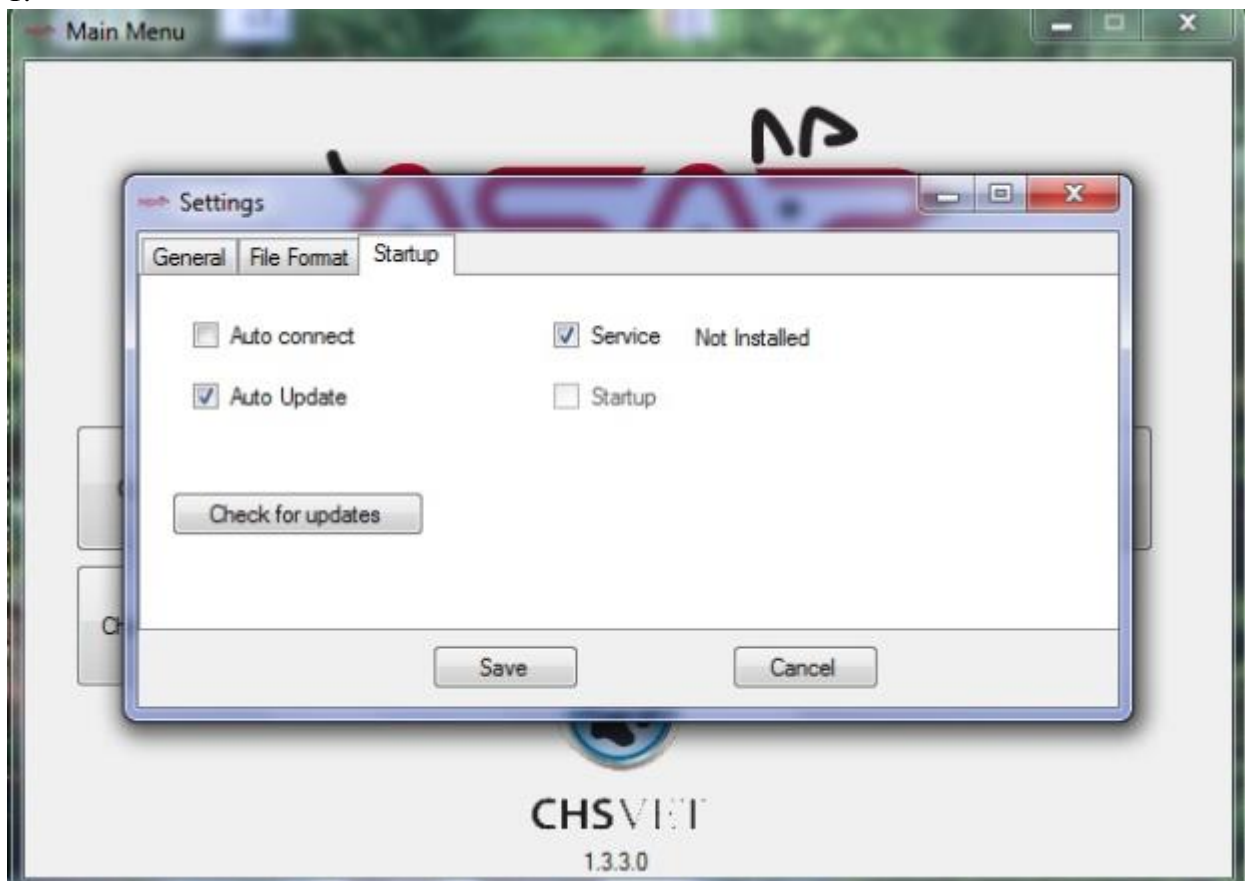
Please note these screen require a special collection kits (\$20) to record and secure chain of custody. You can [order this kit on our website](#) or contact us.

### [ASAP Computer Network and ECR Update - Monday Morning](#)

ASAP Laboratory will be undergoing a major computer upgrade this weekend. We are getting all new computers and joining the national Primary Healthcare network.

**So, what does it mean for you?**

1.



If you are getting results integrated to your practice software - you will need to **update your ECR program first thing Monday morning** - Open your ECR and click on Settings > in the Startup tab please click on **Check for updates** (see below) and follow the prompts.

Please [contact us](#) if you have any problems at all.

2. Please have patience with us this week as we struggle though any likely teething IT issues associated with being on the new network. We will be testing tirelessly on the weekend and hope these will be minimal.

We would like to apologise in advance for any inconvenience this may cause you.

Thank you for reading